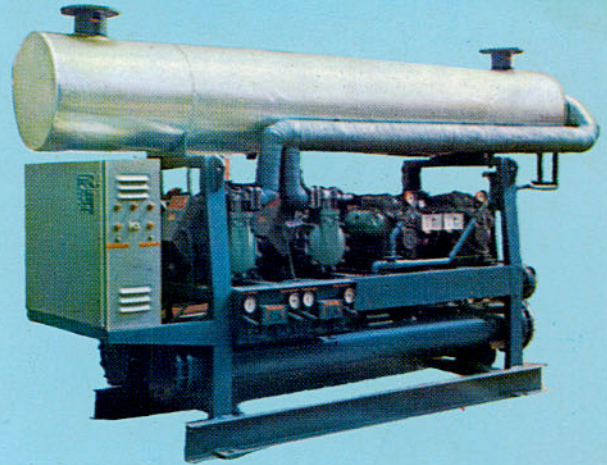




# SARAVEL PACKAGE LIQUID CHILLER

FOR AIR CONDITIONING &  
INDUSTRIAL APPLICATIONS  
27-138 TONS



Saravel packaged chiller is supplied completely assembled with all interconnecting piping completed, low temperature lines insulated, chiller insulated and controls factory wired.

Saravel packaged chiller Models 4 PLC 1000 to 4 PLC 4000 are equipped with four copeland semi-hermetic compressor and are designed for two separate circuit. Complete with following components:

- 1 - Four Motor-compressors 10HP to 40HP semi-hermetic type 380/50/3 1450 R.P.M.
- 2 - Two Condenser carbon steel pipe with integral. Fins copper tubes expanded into the tube sheet designed for 300 psig working pressure.
- 3 - Water chiller - direct expansion type copper tube with inner fins expanded into the tube sheet two separate circuit. Water baffles are properly spaced in the chiller to provide efficient heat transfer with low water pressure drop.
- 4 - Motor starters with thermal overload protection.
- 5 - Two Dual pressure controls.
- 6 - Four Oil pressure controls.
- 7 - Two Thermostatic expansion valves with external equaliser.
- 8 - Two Liquid service shut-off valves.
- 9 - Two Liquid line solenoid valves with pump down circuits.
- 10 - Two Refrigerant charging valves.
- 11 - Two Liquid line replaceable type filter dryers.
- 12 - Two Liquid line double port sight-glasses with moisture indicator.
- 13 - Refrigerant relief valve for each condenser.
- 14 - Suction and discharge pressure gauges. Oil pressure gauges.
- 15 - Anti-freeze control.
- 16 - Four step master temperature control.

## RATINGS

REFRIGERANT 22. 1450 RPM. WATER COOLED OPERATION

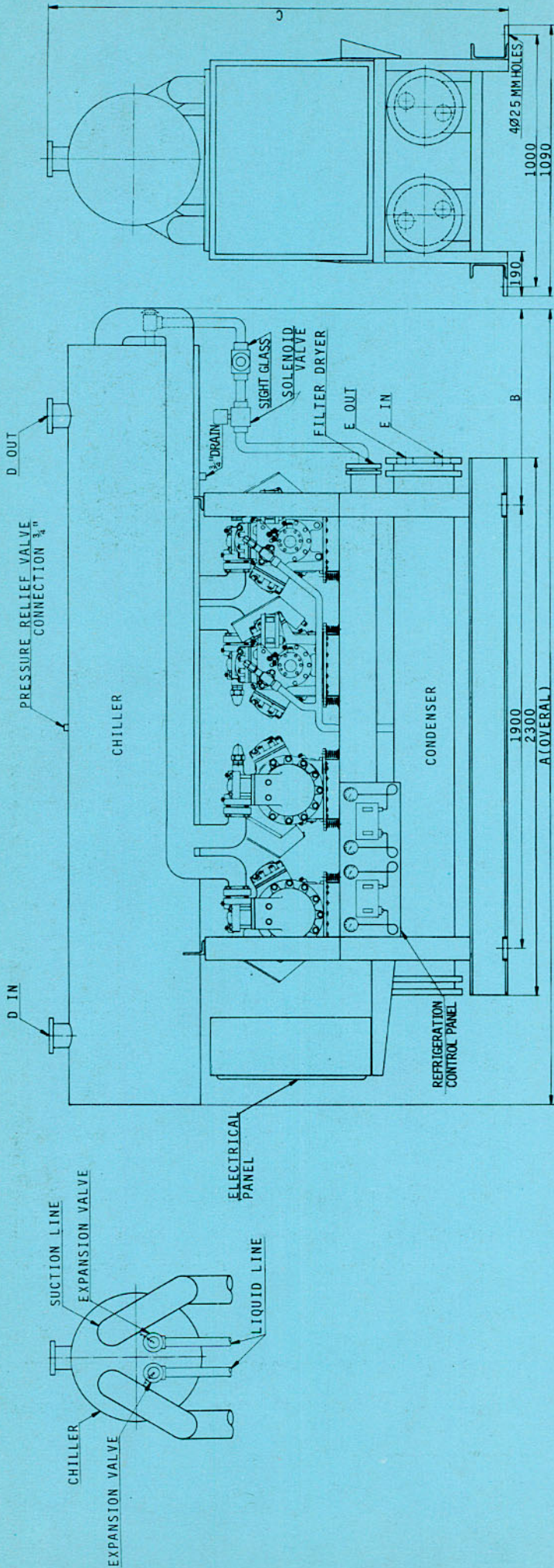
MODEL	LVG. WATER TEMP.	CONDENSING TEMPERATURE				CONDENSER	
		90°F		105°F		GPM.	PD.FT.
		TONS	BHP	TONS	BHP		
4PLC1000	42	29.0	28.5	27.5	27.0	114	11.5
	45	32.9	33.0	31.0	31.0	122	12.2
	48	35.5	36.0	32.9	33.0	126	13.4
4PLC1500	42	46.0	45.0	45.0	44.5	174	11.8
	45	50.8	50.0	47.0	47.0	182	12.0
	48	52.0	51.8	48.5	49.0	189	13.1
4PLC2000	42	61.0	60.0	59.0	58.1	236	12.0
	45	66.3	67.0	64.0	63.8	245	13.1
	48	70.0	70.0	66.5	66.0	251	14.0
4PLC2500	42	80.0	80.0	76.0	76.0	290	12.0
	45	85.0	83.0	79.0	78.5	305	12.9
	48	89.0	87.0	82.2	82.0	310	13.2
4PLC3000	42	94.0	94.0	86.5	86.0	358	12.2
	45	99.1	100.0	94.2	95.0	367	13.0
	48	104.2	105.0	100.0	100.0	374	13.8
4PLC3500	42	108.0	108.0	103.5	104.0	410	12.0
	45	116.5	117.0	108.0	109.0	430	13.4
	48	121.0	120.0	116.2	117.0	450	14.5
4PLC4000	42	125.0	126.0	117.0	117.6	465	12.3
	45	133.0	132.0	125.5	126.0	478	13.4
	48	138.5	139.0	131.0	132.0	488	14.2

### Notes:

- 1 - Capacity based on 10°F water ΔT. May be used also for ΔT 8°F - 15°F.
- 2 - G.P.M. determined from 
$$\text{G.P.M.} = \frac{\text{Tons} \times 24}{(\text{Ent. Water temp.} - \text{Lvg. Water temp.})}$$
- 3 - Condenser G.P.M. based on 10°F water temperature rise and 88°F leaving condenser water.
- 4 - Performance based on 5°F subcooling.

## SARAVEL MANUFACTURING CO.

Villa - Damghan No. 6 Teheran: Tel. 820171, 820172  
Cable: 1444



**DIMENSIONS**

MODEL	CAP. HP. NOM.	A	B	C	D	E*	APPROX. WEIGHT
4PLC1000	40	2800	350	1800	4"	1 1/2"	2000 Kg
4PLC1500	60	2800	350	1860	4"	2"	2100 Kg
4PLC2000	80	2800	350	1860	5"	2 1/2"	2400 Kg
4PLC2500	100	3300	900	1860	5"	3"	2600 Kg
4PLC3000	120	3300	900	1920	5"	3"	2800 Kg
4PLC3500	140	3300	900	2000	6"	4"	3200 Kg
4PLC4000	160	3300	900	2000	6"	4"	3300 Kg

NOTE: ALL DIMENSION IN mm. EXCEPT MENTIONED. ROUGHING IN DIMENSION.

\*MODELS 4PLC1000 AND 4PLC1500 EACH END CONNECTIONS. MODELS 4PLC2000 TO 4PLC4000 SAME END CONNECTIONS.