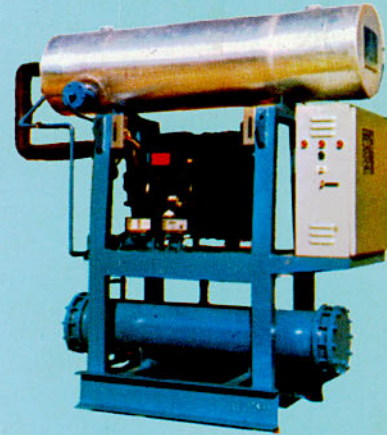




# SARAVEL PACKAGE LIQUID CHILLER

FOR AIR CONDITIONING &  
INDUSTRIAL APPLICATIONS

3.2-35 TONS



## RATINGS

REFRIGERANT 22. 1450 RPM. WATER COOLED OPERATION

Saravel packaged chiller is supplied completely assembled with all interconnected piping, low temperature lines insulated, chiller insulated and controls factory wired.

Saravel packaged chiller Models PLC 0500V to PLC 4000 are equipped with one Copeland semi-hermetic compressor complete with following components:

- 1 - Motor-compressor 10HP to 40HP semi-hermetic type 380/50/3 1450 R.P.M.
- 2 - Condenser carbon steel shell with integral fin copper tubes expanded into the tube sheet designed for 300 psig working pressure.
- 3 - Water chiller direct expansion type copper tube with inner fins expanded into the tube sheet. Water baffles are properly spaced in the chiller to provide efficient heat transfer with low water pressure drop.
- 4 - Motor starter with thermal overload protection.
- 5 - Dual pressure control.
- 6 - Oil pressure control.
- 7 - Thermostatic expansion valve with external equalizer.
- 8 - Liquid service shut-off valve.
- 9 - Liquid line solenoid valve with pump down circuit.
- 10 - Refrigerant charging valve.
- 11 - Liquid line replaceable type filter dryer.
- 12 - Liquid line sight-glass with moisture indicator.
- 13 - Refrigerant relief valve for condenser.
- 14 - Suction, discharge and oil pressure gauges.
- 15 - Anti-freeze control.
- 16 - Master temperature control.

MODEL	LVG. WATER TEMP.	CONDENSING TEMPERATURE				CONDENSER	
		90°F		105°F		GPM	FD. FT.
		TONS	BHP	TONS	BHP		
*PLC0500V	42	3.8	3.7	3.2	3.0	14	7.5
	45	4.1	4.0	3.8	3.5	15	8.0
	48	4.4	4.2	4.1	4.0	17	8.2
*PLC0760V	42	5.8	5.0	5.1	5.0	20	10.0
	45	6.1	6.0	5.9	5.7	23	10.5
	48	6.7	6.2	6.2	6.1	25	11.0
PLC1000	42	7.2	7.0	7.0	7.0	28	11.5
	45	8.5	7.9	7.8	7.5	30	12.0
	48	9.0	8.5	8.2	8.0	33	13.6
PLC1500	42	11.7	11.2	11.5	11.4	40	11.0
	45	12.5	12.2	11.9	12.0	46	13.0
	48	14.0	13.8	13.5	13.2	50	14.0
PLC2000	42	15.0	14.8	14.2	14.5	51	12.0
	45	16.8	16.1	16.0	16.0	60	14.0
	48	17.8	17.2	17.0	17.1	61	14.0
PLC2500	42	18.5	18.2	17.4	18.0	70	10.0
	45	21.0	20.8	19.8	19.5	76	13.0
	48	22.5	22.0	21.2	21.0	78	14.0
PLC3000	42	23.0	22.8	22.0	21.5	82	12.0
	45	25.2	25.0	23.3	23.0	90	12.5
	48	26.0	25.7	25.0	25.0	95	13.0
PLC3500	42	27.1	26.8	26.0	25.7	98	11.0
	45	29.3	29.0	27.4	27.5	106	13.0
	48	30.7	30.0	29.4	29.0	110	13.8
PLC4000	42	31.5	31.4	29.5	29.5	120	13.0
	45	33.4	33.0	31.5	31.0	125	14.5
	48	35.0	34.5	33.0	33.5	134	15.2

Notes:

1 - Capacities based on 10°F water ΔT. May be used also for ΔT 8°F - 15°F.

2 - G.P.M. determined from:  $G.P.M. = \frac{\text{Tons} \times 24}{(\text{Ent. Water temp.} - \text{Lvg. Water temp.})}$

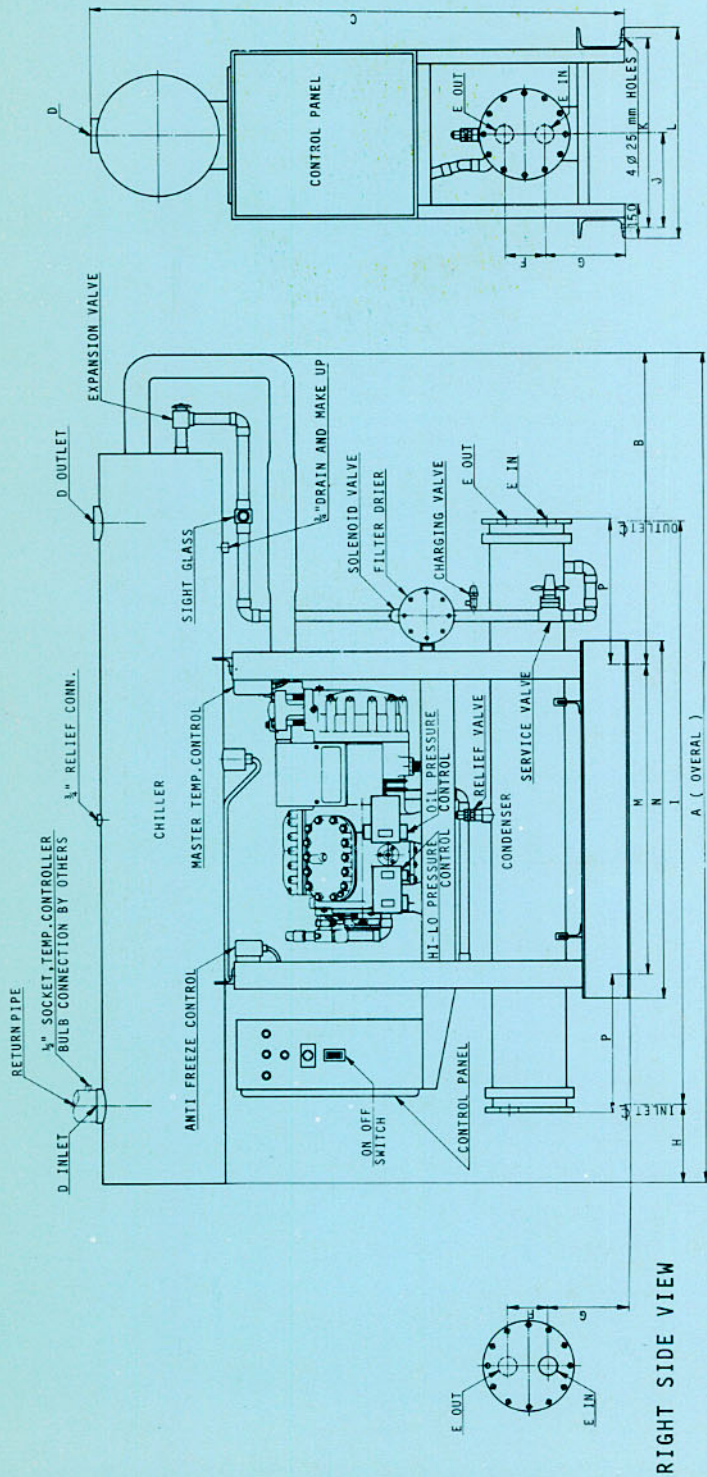
3 - Performance based on 5°F subcooling.

SARAVEL MANUFACTURING CO

75 Pardis, Mollasadra Ave., Tehran 19, IRAN

Sales Off: (021) 686255, 685694  
Tel: Factory: (021) 680583 To 5

Office: 213027 RKWL  
Telex: Factory: 212270 SRVL



RIGHT SIDE VIEW

CONDENSER CONNECTIONS FOR MODELS:  
 PLC2000, PLC2500, PLC3000, PLC3500

**DIMENSIONS**

MODEL	CAP. HP. NOMINAL	A	B	C	D	E	F	G	H	I	J	K	L	P	M	N	APPROX. WEIGHT Kg
PLC0500	5	1700	550	1550	1 1/2"	1 1/4"	100	225	180	970	285	570	620	160	720	860	600
PLC0750	7.5	1700	550	1600	1 1/2"	1 1/4"	110	225	180	970	285	570	620	160	720	860	800
PLC1000	10	1700	550	1600	2"	1 1/2"	60	255	180	970	285	570	620	240	720	860	900
PLC1500	15	1700	550	1650	2"	1 1/2"	110	225	180	970	285	570	620	240	720	860	1200
PLC2000	20	2000	800	1650	2 1/2"	1 1/2"	110	225	240	1260	285	570	620	140	920	1060	1350
PLC2500	25	2450	930	1650	2 1/2"	1 1/2"	130	235	240	1730	285	570	620	260	920	1060	1500
PLC3000	30	2450	930	1650	3"	1 1/2"	130	235	240	1730	285	570	620	420	920	1060	1600
PLC3500	35	2450	930	1700	3"	2"	180	265	240	1730	285	570	620	260	920	1060	1800
PLC4000	40	2450	930	1800	4"	2 1/2"	120	230	240	1730	325	650	700	650	1020	1160	1900

NOTE: ALL DIMENSIONS IN mm EXCEPT AS SPECIFIED.  
 ALL SPECIFICATIONS SUBJECT TO CHANGE WITHOUT NOTICE.  
 ROUGHING IN DIMENSIONS.